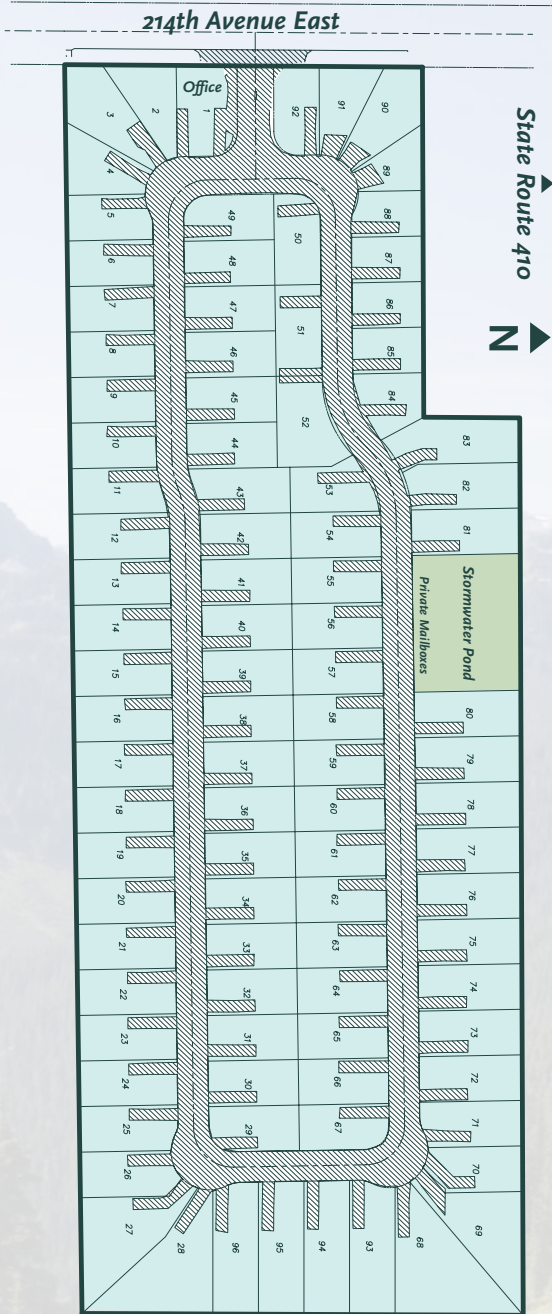


10301 214th Avenue East

RV's 10 years old
or newer Welcome



New!

10301 214TH AVENUE EAST
BONNEY LAKE, WA

TEL: 253-223-4663

E-MAIL: INFO@WOODSIDEMANOR.BIZ

WWW.WOODSIDEMANOR.BIZ



A QUEST HOMES DEVELOPMENT



WOODSIDE

MANOR

RV PARK

BONNEY LAKE, WA



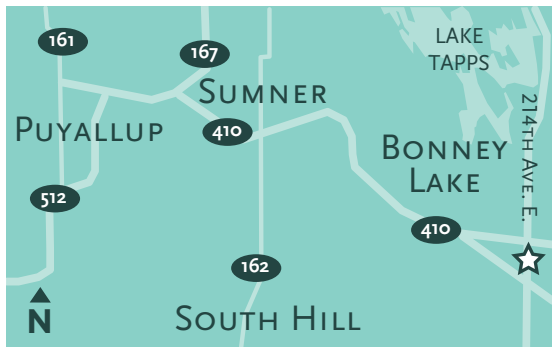
CLOSE TO BONNEY LAKE PLAZA, BONNEY LAKE VILLAGE AND TALL FIRS SHOPPING CENTERS, HOME TO AMENITIES INCLUDING:

- Safeway
- Fred Meyer
- Home Depot
- Rite Aid
- Regal Cinemas
- Starbucks
- Banks
- Dental clinics
- Gas Stations
- Restaurants

WOODSIDE MANOR IS LOCATED ACROSS THE STREET FROM THE WSU DEMONSTRATION FOREST.

PLANS FOR THE 147-ACRE WSU DEMONSTRATION FOREST INCLUDE A MAJOR MEDICAL CENTER, YMCA, SPORTS FIELDS, PARKS AND FOREST WALKING TRAILS.

WOODSIDE MANOR IS JUST THREE MILES FROM ALLAN YORKE PARK AT LAKE TAPPS, WHICH BOASTS TENNIS COURTS, PUBLIC SWIMMING, A BOAT LAUNCH AND MORE.



A NEW QUIET AND CLEAN RV PARK IN BONNEY LAKE FOR RV'ERS. CHOOSE YOUR RV SITE AND ENJOY THE OPEN SPACE ON THESE OVERSIZED RV LOTS. OUR RV PARK IS CLOSE TO SUMNER, PUYALLUP AND TACOMA.



VETERANS WELCOME.
20 MINUTE COMMUTE TO MILITARY INSTALLATIONS.

COMMUNITY DETAILS

- Price includes garbage, water and sewer
- Large lots, ample room for all slides and outdoor living
- Private mail boxes available on site
- Full time RVers welcome
- RV Spaces are 48' wide by 90' deep
- Park Model office on RV Site #1
- Pet friendly

CITY:	CITY OF BONNEY LAKE
COUNTY:	PIERCE COUNTY
SEWER:	BONNEY LAKE UTILITIES
WATER DISTRICT:	VALLEY WATER DISTRICT
FIRE:	EAST PIERCE COUNTY FIRE
POWER:	PUGET SOUND ENERGY
PHONE:	CENTURYLINK
CABLE:	COMCAST CABLE

PARK MODELS & NEWER RVs WELCOME